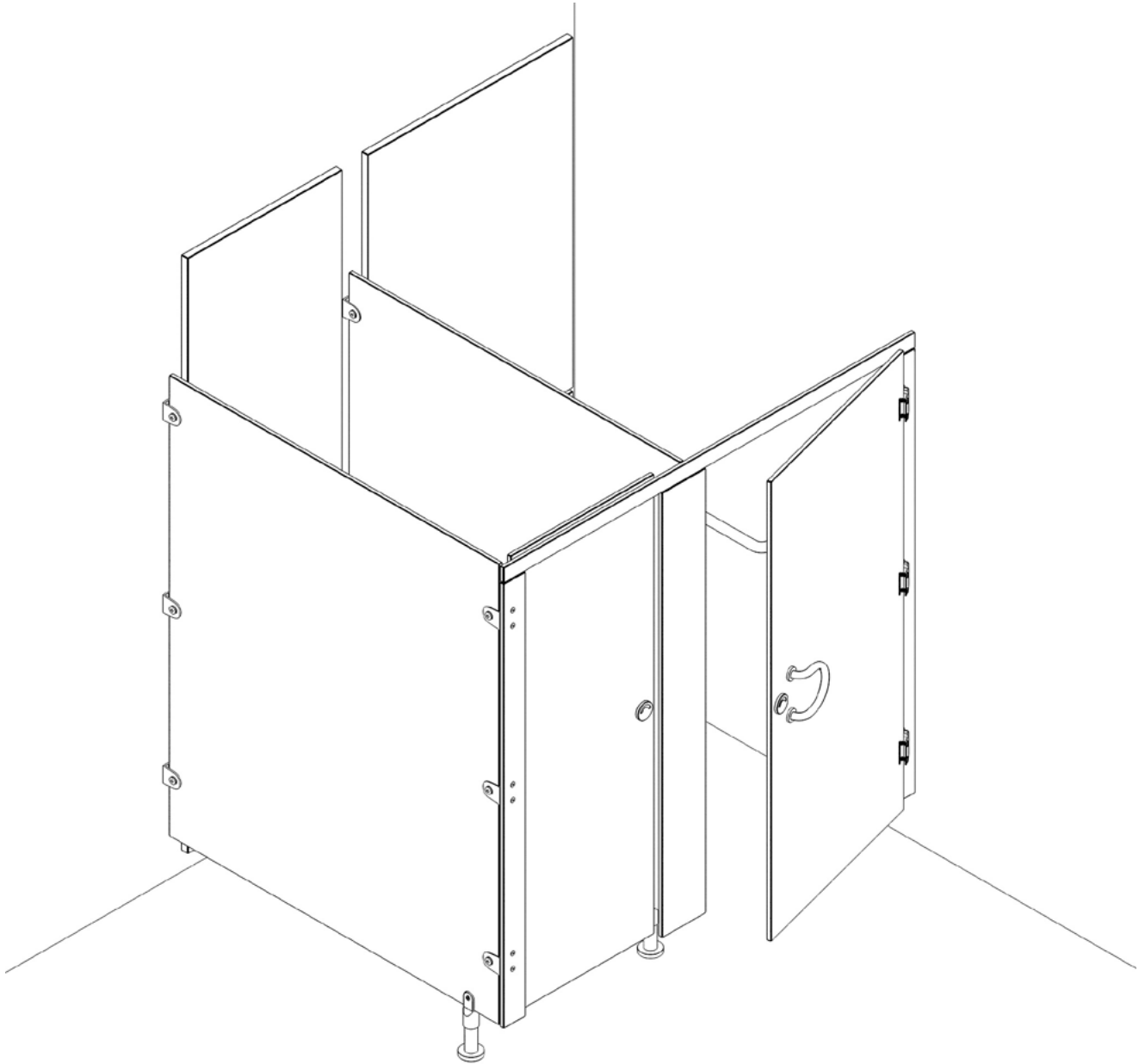


# Technical Overview - Standard<sup>+</sup>



## Considerations

- Minimal tolerance on the drilling for the non bolt through screws.
- Can use décors from any of the leading panel manufacturers.
- Panels can be fully or partially pre-drilled depending on walls and floor.

## Details

- Overall Height - 1900mm
- Floor Clearance - 100mm
- Standard Cubicle Depth - 1500mm (Alternate partition widths on customer request)
- Material Option 1 - 13mm SGL (Nominal thickness, with polished black radiused edge)
- Material Option 2 - 18mm MFC (Nominal thickness, with matching or contrasting edging)

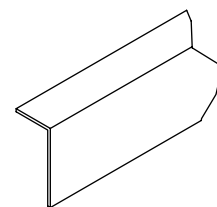
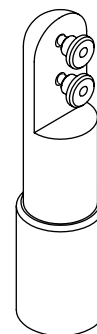
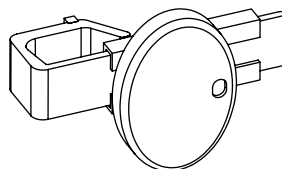
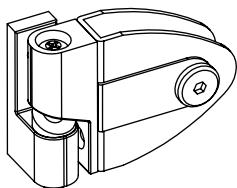
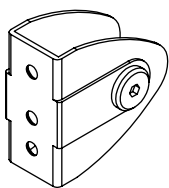
## Drilling

Panel	Overall Drill Holes
Door	8
Partition	6
End Pilaster	(Hinged: 9) (Non Hinged: 3)
Centre Pilaster	9

The number of drill holes above indicates drilling for all components except the leg and the indicator keep which is always done on site.

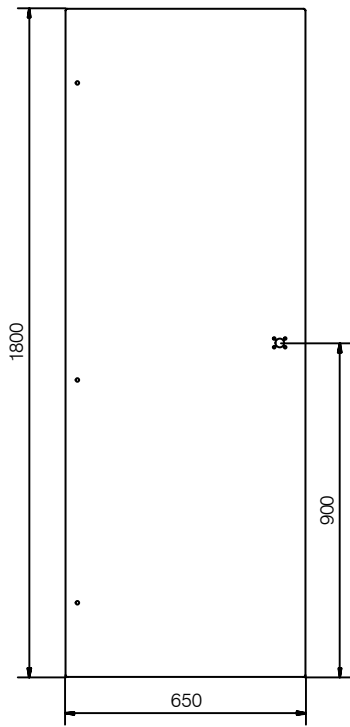
## Fittings

Finish	Reference
Silver Black	Advance Wall Brackets
	Advance Pilaster Bracket
	Advance Hinges
	Advance Indicator Bolt
	Advance Leg
Silver	4M 'L' Headrail
Black	3M 'L' Headrail

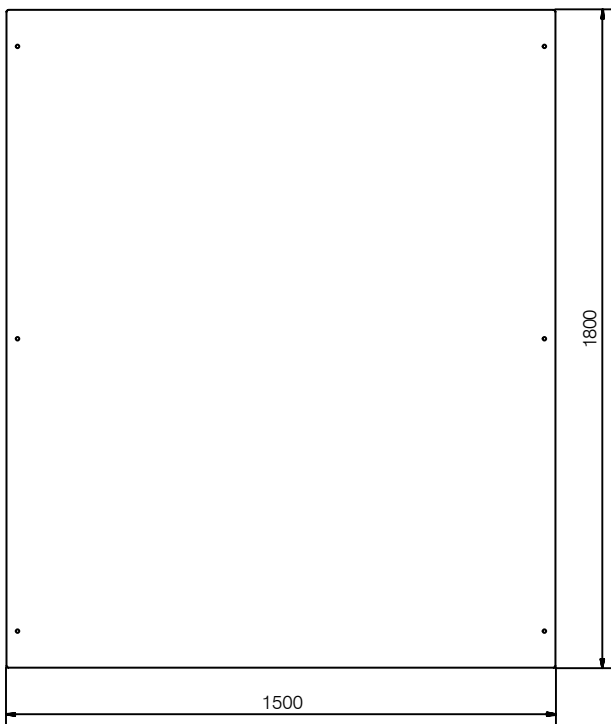


**\*\* NOTE \*\* Please state the finish of the fittings during enquiry.**

# Doors (Standard)



# Partitions (Standard)



# Pilasters (Standard)

