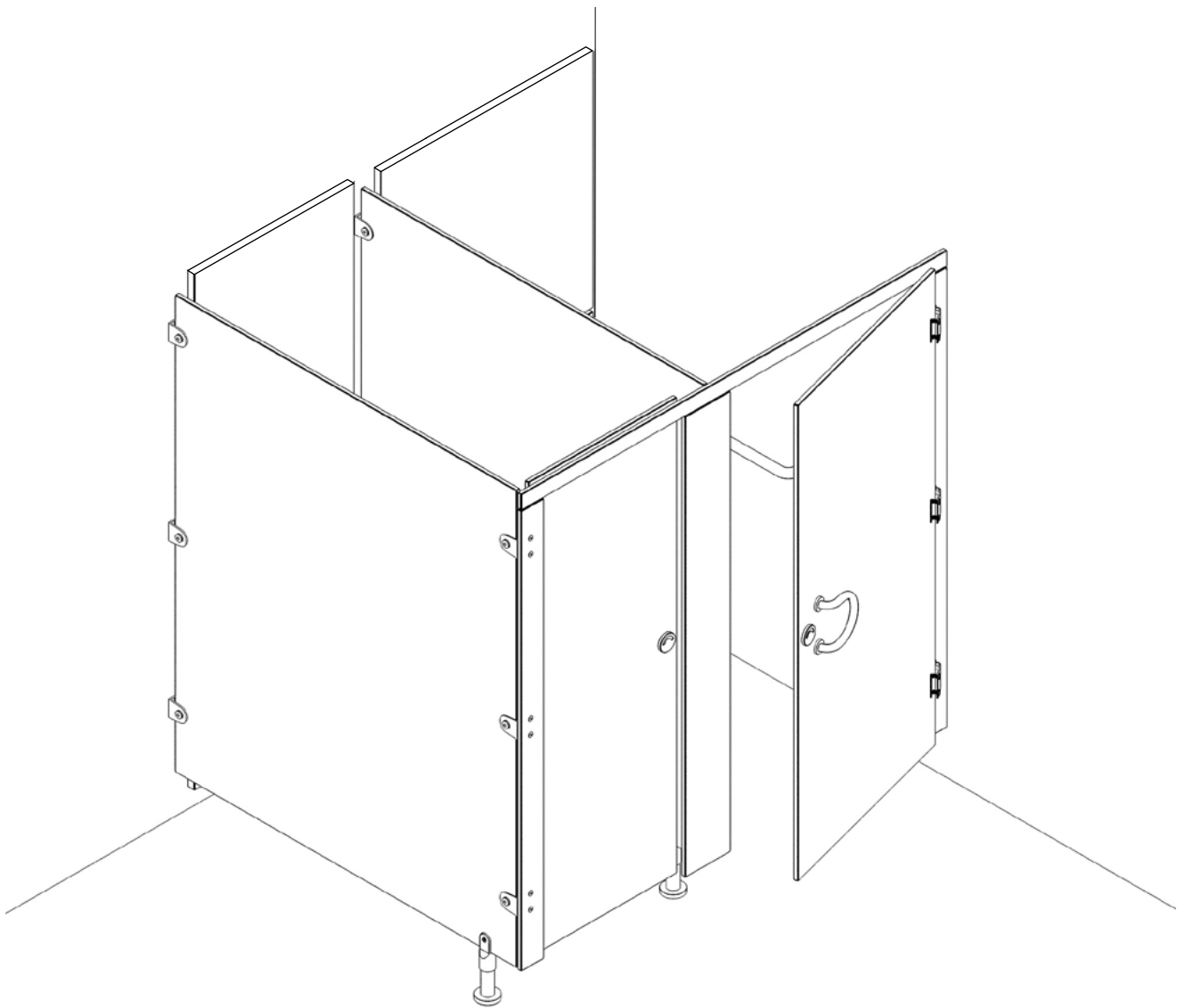


Technical Overview - Private



Considerations

- Level floors required, due to minimal door clearance.
- Minimal tolerance on the drilling for the non bolt through screws.
- Can use décors from any of the leading panel manufacturers.
- Panels can be fully or partially pre-drilled depending on walls and floor.

Details

- Overall Height - 2100mm
- Floor Clearance - Doors & Pilasters: 10mm / Partitions: 25mm
- Standard Cubicle Depth - 1500mm (Alternate partition widths on customer request)
- Material Option 1 - 13mm SGL (Nominal thickness, with polished black radiused edge)
- Material Option 2 - 18mm MFC (Nominal thickness, with matching or contrasting edging)

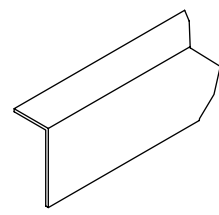
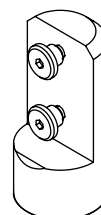
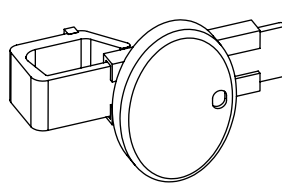
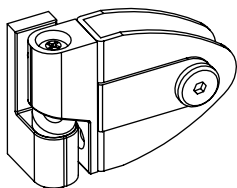
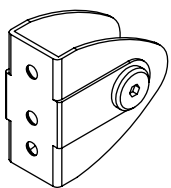
Drilling

Panel	Overall Drill Holes
Door	8
Partition	6
End Pilaster	(Hinged: 9) (Non Hinged: 3)
Centre Pilaster	9

The number of drill holes above indicates drilling for all components except the leg and the indicator keep which is always done on site.

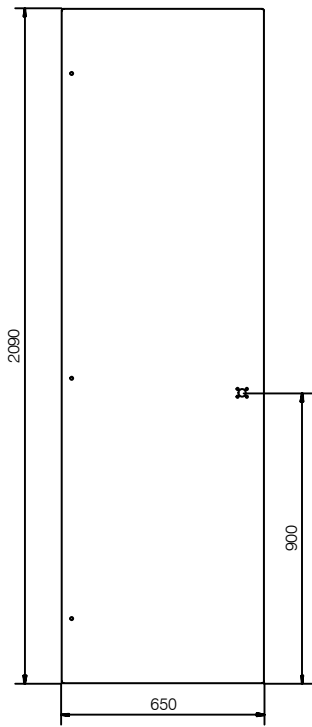
Fittings

Finish	Reference
Silver Black	Advance Wall Brackets
	Advance Pilaster Bracket
	Advance Hinges
	Advance Indicator Bolt
	Low Height Leg
Silver	4M 'L' Headrail
Black	3M 'L' Headrail

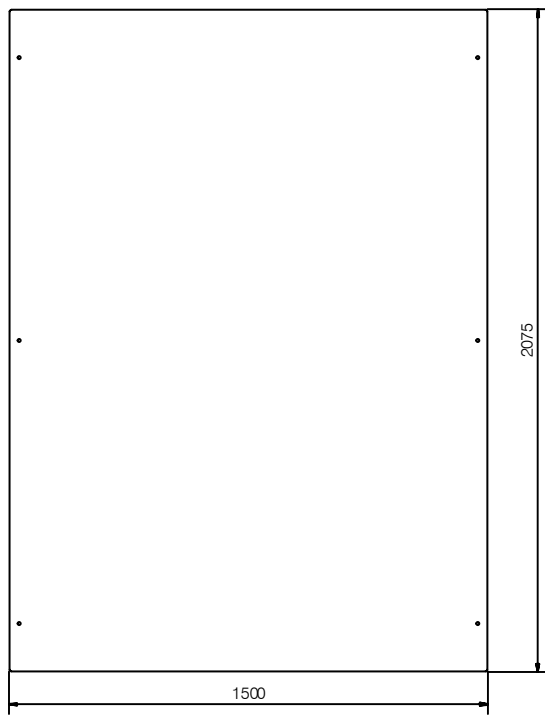


**** NOTE ** Please state the finish of the fittings during enquiry.**

Doors (Standard)



Partitions (Standard)



Pilasters (Standard)

